



IB8367A

Bullet Network Camera



2MP · 30M IR · IP66 · Smart Stream II · SNV · Defog · VIVOCLOUD

VIVOTEK's IB8367A is an all-in-one bullet-style network camera designed for diverse outdoor applications. Equipped with a 2MP sensor enabling viewing resolution of 1920x1080 at a smooth 30 fps, the IB8367A is an ideal and highly adaptable outdoor camera capable of capturing high quality video at high resolutions of up to 2 Megapixel even in low light environments.

The IB8367A features VIVOTEK's sophisticated Smart Stream II technology, allowing the camera to optimize image quality for desired regions, and thus ensuring maximum efficiency of bandwidth usage and savings of up to 50% on bandwidth and storage requirements. In order to adapt to constantly changing outdoor lighting conditions, the IB8367A also features a removable IR-cut filter as well as IR illuminators effective up to 30M for superior image quality around the clock. For protection against harsh outdoor environments, the camera is encased in a weather-proof IP66-rated housing, making it impervious to rain and dust. The robustness of the IB8367A is further strengthened by the adoption of rugged IK10 design housing.

Incorporating a number of advanced features standard for VIVOTEK cameras, including video rotation, defog, a dedicated MicroSD/SDHC/SDXC card slot, and VIVOTEK's 32-channel recording software, the IB8367A is the ideal solution for various outdoor surveillance needs.

Key Features

- 2-Megapixel CMOS Sensor
- 30 fps @ 1920x1080
- Real-time H.264, MJPEG Compression (Dual Codec)
- Removable IR-cut Filter for Day & Night Function
- Built-in IR Illuminators, Effective up to 30 Meters
- Built-in 802.3af Compliant PoE
- Built-in MicroSD/SDHC/SDXC Card Slot for On-board Storage
- Supports ONVIF Standard to Simplify Integration and Enhance Interoperability
- Weather-proof IP66-rated and Vandal-proof IK10-rated Metal Housing
- Smart Stream II to Optimize Bandwidth Efficiency
- 3D Noise Reduction
- Smart IR Technology to Avoid Overexposure
- SNV (Supreme Night Visibility)
- VIVOCLOUD Mobile App



Without Smart Stream II

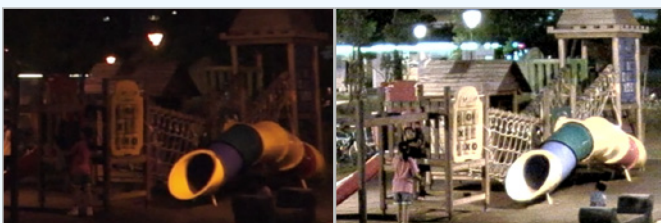
With Smart Stream II



Warehouse



Campus



Ordinary Camera

VIVOTEK SNV Camera



Residential



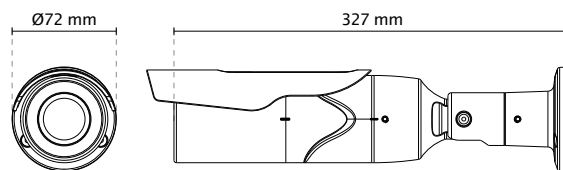
Station

Technical Specifications

Model	IB8367A
System Information	
CPU	Multimedia SoC (System-on-Chip)
Flash	128MB
RAM	256MB
Camera Features	
Image Sensor	1/2.9" Progressive CMOS
Maximum Resolution	1920x1080 (2MP)
Lens Type	Vari-focal, Manual
Focal Length	f = 2.8~12mm
Aperture	F1.4~F2.4
Auto-iris	DC-iris
Field of View	36.2°~100.6° (Horizontal) 20.4°~54.9° (Vertical) 38.3°~103.1° (Diagonal)
Shutter Time	1/5 sec. to 1/32,000 sec.
WDR Technology	WDR Enhanced
Day/Night	Removable IR-cut filter for day & night function
Minimum Illumination	0.05 Lux @ F1.4 (Color) 0.01 Lux @ F1.4 (B/W)
Pan/Tilt/Zoom Functionalities	ePTZ: 48x digital zoom (4x on IE plug-in, 12x built-in)
IR Illuminators	Built-in IR illuminators, effective up to 30 meters with Smart IR IR LED*10
On-board Storage	Slot type: MicroSD/SDHC/SDXC card slot Seamless Recording
Video	
Compression	H.264 & MJPEG
Maximum Frame Rate	30 fps @ 1920x1080 In both compression modes
Maximum Streams	4 simultaneous streams
S/N Ratio	65 dB
Dynamic Range	69.4 dB
Video Streaming	Adjustable resolution, quality and bitrate Smart Stream II
Image Settings	Time stamp, text overlay, flip & mirror Configurable brightness, contrast, saturation, sharpness, white balance, exposure control, gain, backlight compensation, privacy masks Scheduled profile settings, 3D noise reduction, video rotation, defog
Network	
Users	Live viewing for up to 10 clients
Protocols	IPv4, IPv6, TCP/IP, HTTP, HTTPS, UPnP, RTSP/RTP/RTCP, IGMP, SMTP, FTP, DHCP, NTP, DNS, DDNS, PPPoE, CoS, QoS, SNMP, 802.1X, UDP, ICMP, ARP, SSL, TLS, CIFS/SMB
Interface	10 Base-T/100 BaseTX Ethernet (RJ-45) *It is highly recommended to use standard CAT5e & CAT6 cables which are compliant with the 3P/ETL standard.

ONVIF	Supported, specification available at www.onvif.org
Intelligent Video	
Video Motion Detection	Five-window video motion detection
Alarm and Event	
Alarm Triggers	Motion detection, manual trigger, periodical trigger, system boot, recording notification, camera tampering detection
Alarm Events	Event notification using HTTP, SMTP, FTP, NAS server and MicroSD card File upload via HTTP, SMTP, FTP, NAS server and MicroSD card
General	
Connectors	RJ-45 for Network/PoE connection
LED Indicator	System power and status indicator
Power Input	IEEE 802.3af PoE Class 0
Power Consumption	Max. 10 W
Dimensions	Ø 72 x 327 mm
Weight	Net: 1085 g
Casing	Weather-proof IP66-rated housing Vandal-proof IK10-rated metal housing
Safety Certifications	CE, LVD, FCC Class A, VCCI, C-Tick, UL
Operating Temperature	Starting Temperature: -10°C ~ 50°C (14°F ~ 122°F) Working Temperature: -20°C ~ 50°C (-4°F ~ 122°F)
Humidity	90%
Warranty	36 months
System Requirements	
Operating System	Microsoft Windows 8/7
Web Browser	Internet Explorer 10/11 Chrome version 58.0.3029 or above
Other Players	VLC: 1.1.11 or above QuickTime: 7 or above
Included Accessories	
Others	Quick installation guide, alignment sticker, cable management bracket, screw pack, sun shield

Dimensions



Compatible Accessories

Mounting Kits



AM-523
Adapting Plate

Cloud-based Solution





IB8369A

Bullet Network Camera



2MP · 30M IR · IP66 · IK10 · Smart Stream II · SNV · Defog · VIVOCLOUD

VIVOTEK's IB8369A is an all-in-one bullet-style network camera designed for diverse outdoor applications. Equipped with a 2MP sensor enabling viewing resolution of 1920x1080 at a smooth 30 fps, the IB8369A is an ideal and highly adaptable outdoor camera capable of capturing high quality video at high resolutions of up to 2 Megapixel.

The IB8369A features VIVOTEK's sophisticated Smart Stream II technology, allowing the camera to optimize image quality for the most important regions in any scene, and thus ensuring maximum efficiency of bandwidth usage and savings of up to 50% on bandwidth and storage requirements. In order to adapt to constantly changing outdoor lighting conditions, the IB8369A also features a removable IR-cut filter as well as IR illuminators effective up to 30M for superior image quality around the clock. For protection against harsh outdoor environments, the camera is encased in a weather-proof IP66-rated housing, making it impervious to rain and dust. The robustness of the IB8369A is further strengthened by the adoption of rugged IK10 design housing.

Incorporating a number of advanced features standard for VIVOTEK cameras, including video rotation, defog, a dedicated MicroSD/SDHC/SDXC card slot, and VIVOTEK's 32-channel recording software, the IB8369A is the ideal solution for your outdoor surveillance needs.

Key Features

- 2-Megapixel CMOS Sensor
- 30 fps @ 1920x1080
- Real-time H.264, MJPEG Compression (Dual Codec)
- Removable IR-cut Filter for Day & Night Function
- Built-in IR Illuminators, Effective up to 30 Meters
- Built-in 802.3af Compliant PoE
- Built-in MicroSD/SDHC/SDXC Card Slot for On-board Storage
- Supports ONVIF Standard to Simplify Integration and Enhance Interoperability
- Weather-proof IP66-rated and Vandal-proof IK10-rated Metal Housing
- Smart Stream II to Optimize Bandwidth Efficiency
- 3D Noise Reduction
- Smart IR Technology to Avoid Overexposure
- SNV (Supreme Night Visibility) for Low Light Conditions
- VIVOCLOUD Mobile App



Without Smart Stream II

With Smart Stream II



Parking Lot



Campus



Ordinary Camera

VIVOTEK SNV Camera



Residential



Street

Technical Specifications

Model	IB8369A
System Information	
CPU	Multimedia SoC (System-on-Chip)
Flash	128MB
RAM	256MB
Camera Features	
Image Sensor	1/2.9" Progressive CMOS
Maximum Resolution	1920x1080 (2MP)
Lens Type	Fixed-focal
Focal Length	f = 3.6 mm
Aperture	F2.1
Field of View	78° (Horizontal) 42° (Vertical) 84° (Diagonal)
Shutter Time	1/5 sec. to 1/32,000 sec.
WDR Technology	WDR Enhanced
Day/Night	Removable IR-cut filter for day & night function
Minimum Illumination	0.06 Lux @ F2.1 (Color) 0.01 Lux @ F2.1 (B/W)
Pan/Tilt/Zoom Functionalities	ePTZ: 48x digital zoom (4x on IE plug-in, 12x built-in)
IR Illuminators	Built-in IR illuminators, effective up to 30 meters with Smart IR IR LED*10
On-board Storage	Slot type: MicroSD/SDHC/SDXC card slot Seamless Recording
Video	
Compression	H.264 & MJPEG
Maximum Frame Rate	30 fps @ 1920x1080 In both compression modes
Maximum Streams	4 simultaneous streams
S/N Ratio	65 dB
Dynamic Range	69.4 dB
Video Streaming	Adjustable resolution, quality and bitrate Smart Stream II
Image Settings	Time stamp, text overlay, flip & mirror Configurable brightness, contrast, saturation, sharpness, white balance, exposure control, gain, backlight compensation, privacy masks Scheduled profile settings, 3D noise reduction, video rotation, defog
Network	
Users	Live viewing for up to 10 clients
Protocols	IPv4, IPv6, TCP/IP, HTTP, HTTPS, UPnP, RTSP/RTP/RTCP, IGMP, SMTP, FTP, DHCP, NTP, DNS, DDNS, PPPoE, CoS, QoS, SNMP, 802.1X, UDP, ICMP, ARP, SSL, TLS, CIFS/SMB
Interface	10 Base-T/100 BaseTX Ethernet (RJ-45) *It is highly recommended to use standard CAT5e & CAT6 cables which are compliant with the 3P/ETL standard.
ONVIF	Supported, specification available at www.onvif.org

Intelligent Video

Video Motion Detection Five-window video motion detection

Alarm and Event

Alarm Triggers Motion detection, manual trigger, periodical trigger, system boot, recording notification, camera tampering detection

Alarm Events Event notification using HTTP, SMTP, FTP, NAS server and MicroSD card
File upload via HTTP, SMTP, FTP, NAS server and MicroSD card

General

Connectors RJ-45 for Network/PoE connection

LED Indicator System power and status indicator

Power Input IEEE 802.3af PoE Class 0

Power Consumption Max. 10 W

Dimensions Ø 72 x 300 mm

Weight Net: 1010 g

Casing Weather-proof IP66-rated housing
Vandal-proof IK10-rated metal housing

Safety Certifications CE, LVD, FCC Class A, VCCI, C-Tick, UL

Operating Temperature Starting Temperature: -10°C ~ 50°C (14°F ~ 122°F)
Working Temperature: -20°C ~ 50°C (-4°F ~ 122°F)

Humidity 90%

Warranty 24 months

System Requirements

Operating System Microsoft Windows 8/7

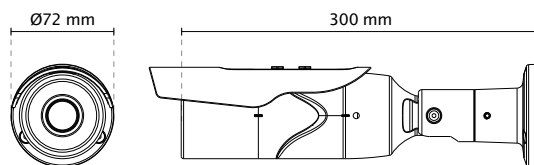
Web Browser Internet Explorer 10/11
Chrome version 58.0.3029 or above

Other Players VLC: 1.1.11 or above
QuickTime: 7 or above

Included Accessories

Others Quick installation guide, alignment sticker, cable management bracket, screw pack, sunshield

Dimensions



Compatible Accessories

Mounting Kits



AM-523
Adapting Plate

Cloud-based Solution





IB8360/60-W Mini Bullet Network Camera

2MP • 12M IR • SNV • Smart Stream II • IP66 • PoE •
WiFi • Compact Size • VIVOCLOUD

VIVOTEK's IB8360 and IB8360-W (wireless) are stylish 2-megapixel mini outdoor bullet network cameras, specifically designed for boutique retail applications. Delivering a resolution of 1920x1080 at 30 fps, having IR illuminators effective up to 12 meters, and including SNV technology for low light environments, these remarkable cameras provide users with superior image quality around the clock.

When coupled with VIVOTEK's Smart Stream II technology, the IB8360/IB8360-W can reduce both bandwidth and storage consumption by up to 50%* while retaining the same superb image quality as a Full HD camera. Built to withstand challenging

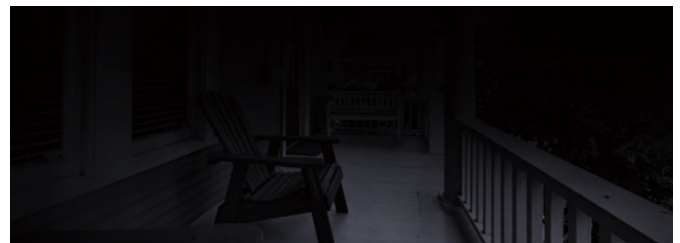
weather conditions, the IB8360/IB8360-W is armed with weather-proof IP66-rated housing to withstand rain and dust, and ensure smooth operation.

VIVOTEK provides two easy-to-install options for this compact camera; the IB8360-W boasts a 802.11b/g/n compatible wireless connection, and the IB8360 is designed for Power over Ethernet (PoE) functionality. Both cameras were designed and constructed for simple installation and easy connection.

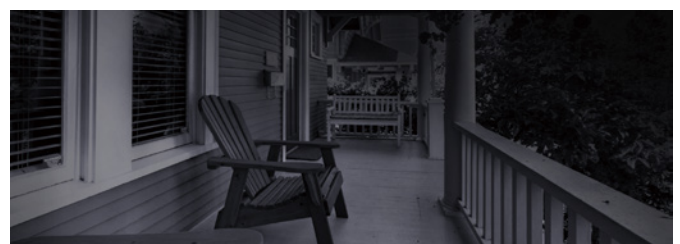
* Depending on scenes

Key Features

- 30 fps @ 1920x1080
- Built-in IR Illuminators up to 12 Meters
- Smart IR Technology to Avoid Overexposure
- SNV (Supreme Night Visibility) for Low Light Conditions
- Smart Stream II to Optimize Bandwidth Efficiency
- Weather-proof IP66-rated Housing
- Built-in 802.3af Compliant PoE (IB8360)
- Built-in 802.11 b/g/n WLAN (IB8360-W)
- Built-in MicroSD/SDHC/SDXC Card Slot for On-board Storage
- Compact Size
- VIVOCLOUD Mobile App



IR off



IR On

Technical Specifications

Model	IB8360: PoE, 12M IR, IP66 IB8360-W: WiFi, 12M IR, IP66	IB8360: IPv4, IPv6, TCP/IP, HTTP, HTTPS, UPnP, RTSP/ RTP/RTCP, IGMP, SMTP, FTP, DHCP, NTP, DNS, DDNS, PPPoE, CoS, QoS, SNMP, 802.1X, SSL, TLS, ARP, CIFS/SMB IB8360-W: IPv4, IPv6, TCP/IP, HTTP, HTTPS, UPnP, RTSP/ RTP/RTCP, IGMP, SMTP, FTP, DHCP, NTP, DNS, DDNS, SNMP, SSL, TLS, ARP, CIFS/SMB
System Information		Protocols
CPU	Multimedia SoC (System-on-Chip)	Interface
Flash	128MB	IB8360: 10 Base-T/100 Base-TX Ethernet(RJ-45) IB8360-W: IEEE 802.11 b/g/n WLAN
RAM	256MB	ONVIF
Camera Features		Supported, specification available at www.onvif.org
Image Sensor	1/2.9" Progressive CMOS	Intelligent Video
Max. Resolution	1920x1080	Video Motion Detection
Lens Type	Fixed-focal	Five-window video motion detection
Focal Length	f = 3.6 mm	Alarm and Event
Aperture	F2.0	Alarm Triggers
Iris type	Fixed-iris	Motion detection, manual trigger, periodical trigger, system boot, recording notification, camera tampering detection
Field of View	89° (Horizontal) 46° (Vertical) 105° (Diagonal)	Alarm Events
Shutter Time	1/5 sec. to 1/32,000 sec.	Event notification using HTTP, SMTP, FTP, NAS server and MicroSD card File upload via HTTP, SMTP, FTP, NAS server and MicroSD card
WDR Technology	WDR Enhanced	General
Day/Night	Yes	Connectors
Removable IR-cut filter	Yes	IB8360: RJ-45 cable connector for 10/100Mbps Network/PoE connection*1 IB8360-W: DC 12V power input*1
IR Illuminators	Built-in IR illuminators, effective up to 12 meters with Smart IR, IR LED*10	LED Indicator
Minimum Illumination	0.1 Lux @ F2.0 (Color) 0.01 Lux @ F2.0 (B/W) 0 Lux with IR illumination on	Power Input
Pan/Tilt/Zoom Functionalities	ePTZ: 48x digital zoom (4x on IE plug-in, 12x built in)	IB8360: IEEE 802.3af PoE Class 2 IB8360-W: DC 12V 1.5A
On-board Storage	Slot type: MicroSD/SDHC/SDXC card slot Seamless Recording	Power Consumption
Video		Max. 6.1 W
Compression	H.264, MJPEG	Dimensions
Maximum Frame Rate	30 fps @ 1920x1080	99.22 x 74.47 x 163.53 mm
Maximum Streams	3 simultaneous streams	Weight
S/N Ratio	65dB	IB8360-W: 195 g IB8360: 220 g
Dynamic Range	70dB	Casing
Video Streaming	Adjustable resolution, quality and bitrate, Smart Stream II	IP66
Image Settings	Adjustable image size, quality and bit rate; Time stamp, text overlay, flip & mirror; Configurable brightness, contrast, saturation, sharpness, white balance, exposure control, gain, backlight compensation, privacy masks; Scheduled profile settings, defog, 3DNR, video rotation	Safety Certifications
Network		CE, LVD, FCC Class A, VCCI, C-Tick
Users	Live viewing for up to 10 clients	Operating Temperature
		Starting Temperature: -20°C ~ 50°C (-4°F ~ 122°F) Working Temperature: -20°C ~ 50°C (-4°F ~ 122°F)
		Humidity
		90%
		Warranty
		24 months
		System Requirements
		Operating System
		Microsoft Windows 8/7
		Web Browser
		Mozilla Firefox 7~43 (streaming only) Internet Explorer 10/11
		Other Players
		VLC: 1.1.11 or above Quicktime: 7 or above
		Included Accessories
		Power Adapter
		IB8360-W: 12V, 1.5A DC power adapter
		Others
		Quick installation guide, warranty card, stand with screw kit

Technical Specifications

Dimensions

